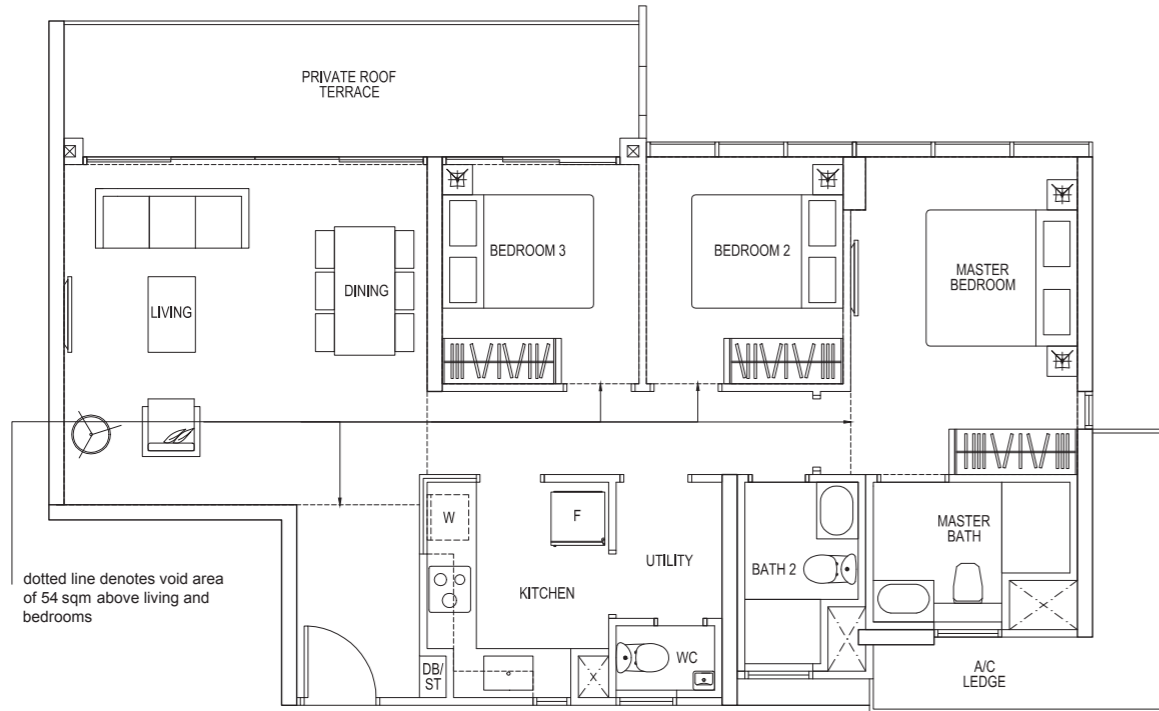


# TYPE H C2r

## 3-BEDROOM

Total Area = 161 sqm  
(Including Void Area of 54 sqm)

#18-01 HIGH CEILING



dotted line denotes void area of 54 sqm above living and bedrooms



Area includes A/C ledge, balcony, Private roof terrace and void area. Some units are mirror images of the apartment plans shown in the brochure. Please refer to the key plans for orientation. The plans are subject to change as may be approved by the relevant authorities. All floors areas are approximate measurements only and are subject to government resurvey. Abbreviation: A/C ledge (Aircon Ledge), Private Roof Terrace, ST (Store), DB (Distribution Board), F (Fridge), W (Washing Machine).

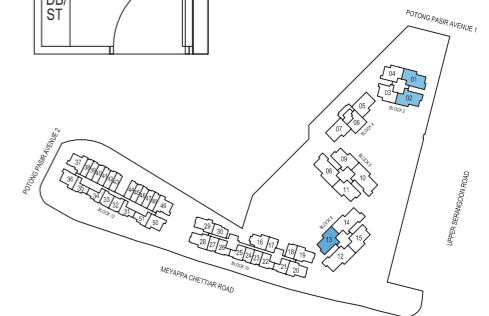
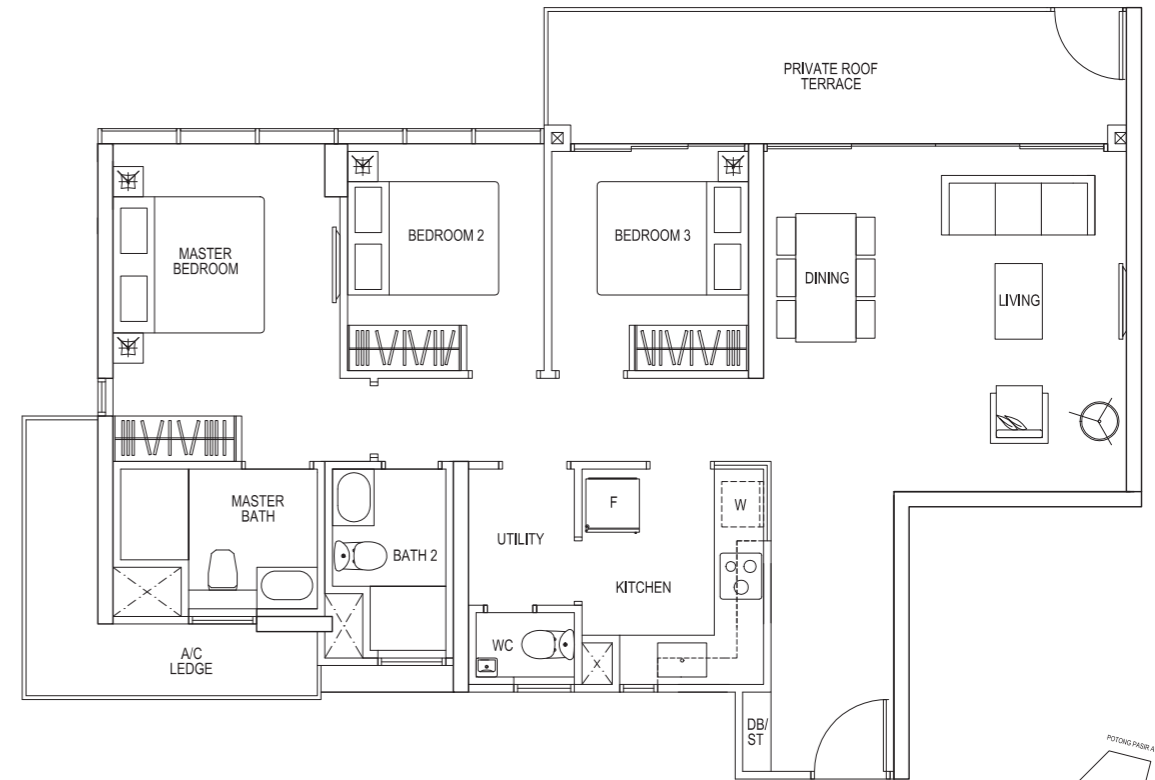
# TYPE H C2ap

## 3-BEDROOM

Total Area = 110 sqm

#04-02

#04-13



KEY PLAN

