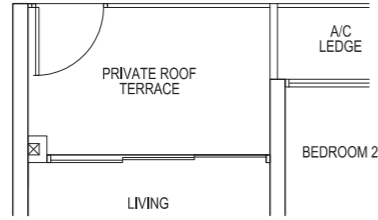


TYPE H BS1p

2-BEDROOM + STUDY

Total Area = 77 sqm

#04-06



TYPE H BS1

2-BEDROOM + STUDY

Total Area = 77 sqm

#05-06 to #17-06



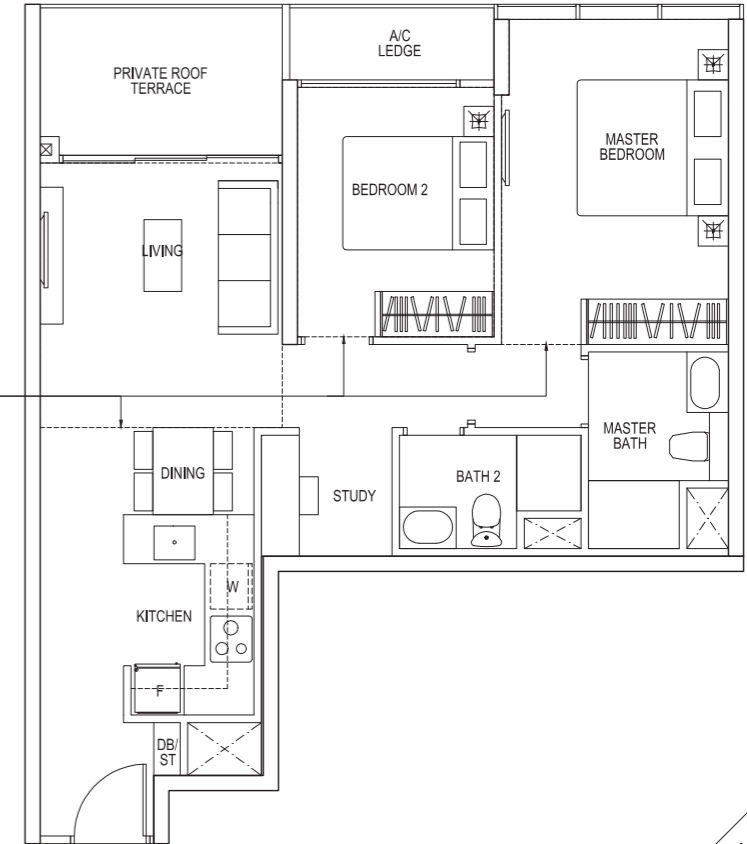
TYPE H BS1r

2-BEDROOM + STUDY

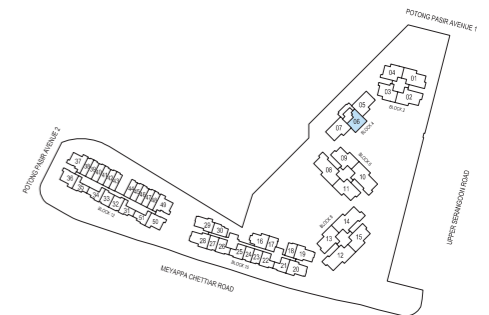
Total Area = 113 sqm
(Including Void Area of 36 sqm)

#18-06 HIGH CEILING

dotted line denotes void area of 36 sqm above living and bedrooms



Area includes A/C ledge, balcony, Private roof terrace and void area. Some units are mirror images of the apartment plans shown in the brochure. Please refer to the key plans for orientation. The plans are subject to change as may be approved by the relevant authorities. All floors areas are approximate measurements only and are subject to government resurvey. Abbreviation: A/C ledge (Aircon Ledge), Private Roof Terrace, ST (Store), DB (Distribution Board), F (Fridge), W (Washing Machine).



KEY PLAN

